



REGIONAL SPECIALISED METEOROLOGICAL CENTRE-TROPICAL CYCLONES, NEW DELHI SPECIAL TROPICAL WEATHER OUTLOOK

DEMS-RSMC TROPICAL CYCLONES NEW DELHI DATED 30.05.2025

SPECIAL TROPICAL WEATHER OUTLOOK FOR THE NORTH INDIAN OCEAN (THE BAY OF BENGAL AND THE ARABIAN SEA) VALID FOR THE NEXT 168 HOURS ISSUED AT 0630 UTC OF 30.05.2025 BASED ON 0300 UTC OF 30.05.2025.

Sub: Depression over Bangladesh

The depression over Bangladesh moved north-northeastwards with a speed of 18 kmph during past 6 hours and lay centred at 0300 UTC of today, the 30th May 2025 over Bangladesh near latitude 24.4° N and longitude 89.6° E, about 40 km west-northwest of Tangail (41909), 110 km northwest of Dhaka (41923), 140 km north of Berhampore (42603) and 260 km west-southwest of Shillong (42516).

It is very likely to continue to move nearly north-northeastwards and weaken into a well-marked low pressure area during next 12 hours.

As per the satellite imagery based on 0300 UTC of 30th May, associated scattered to broken low and medium clouds with embedded intense to very intense convection lay over north and central Bay of Bengal, Bangladesh and Manipur, Mizoram and Tripura. Minimum cloud top temperature is -75°C to -90°C. Moderate to intense convection lay over Odisha, Gangetic West Bengal and Northeastern states. Minimum cloud top temperature is -50°C to -70°C.

The associated estimated central pressure is 988 hPa and the associated maximum sustained wind speed is 25 knots gusting to 35 knots around the system centre. Winds are higher in the eastern sector with convergence of southerly and southeasterly winds from the Bay of Bengal.

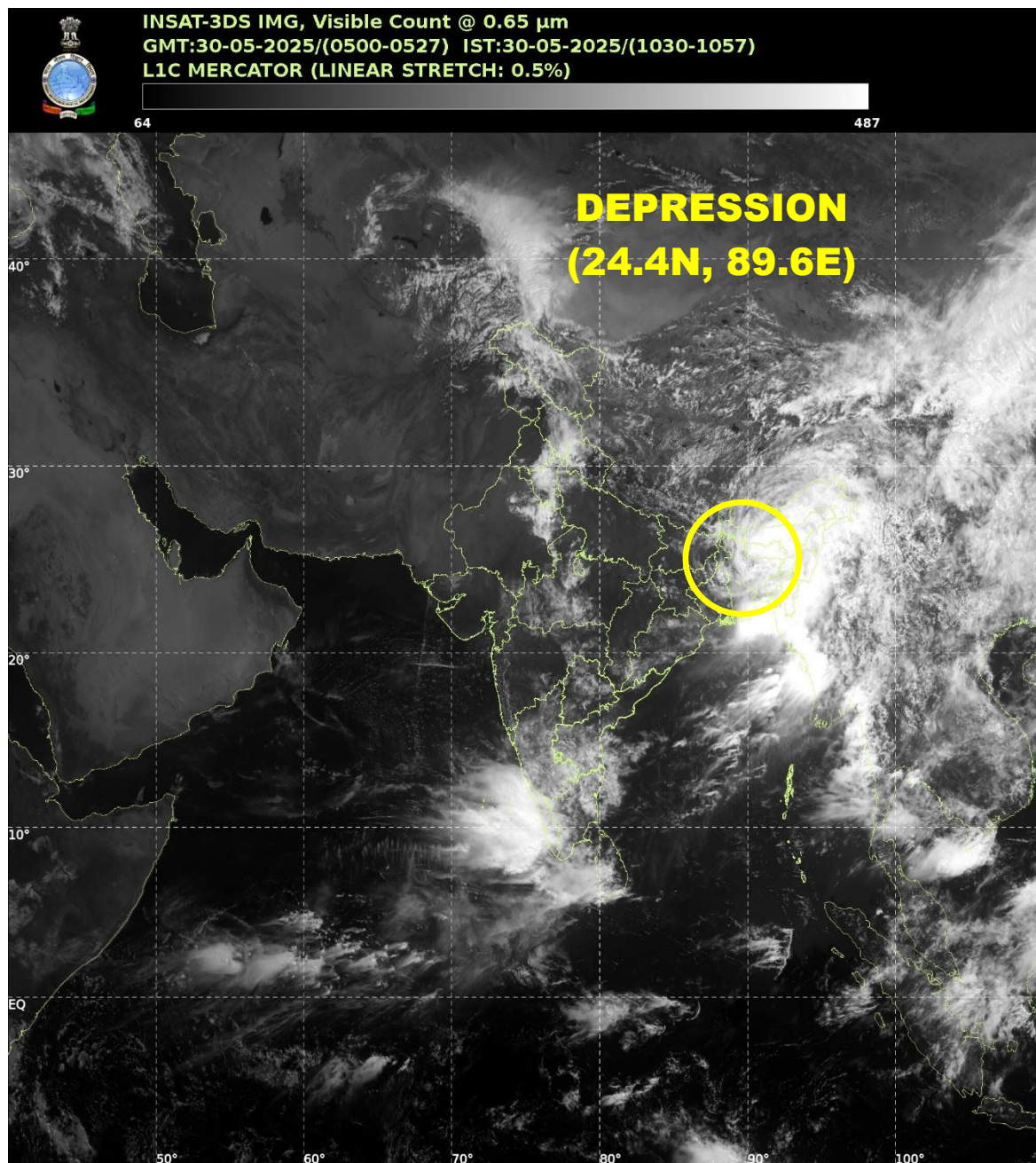
Tarash Sirajgani (41897) reported MSLP as 990.8 hPa, Ishwardi (41907) reported MSLP as 991.3 hPa, Tangail (41909) reported MSLP 989.7 hPa, Kumarkhali (Bangladesh) reported 9991.3 hPa.

Remarks:

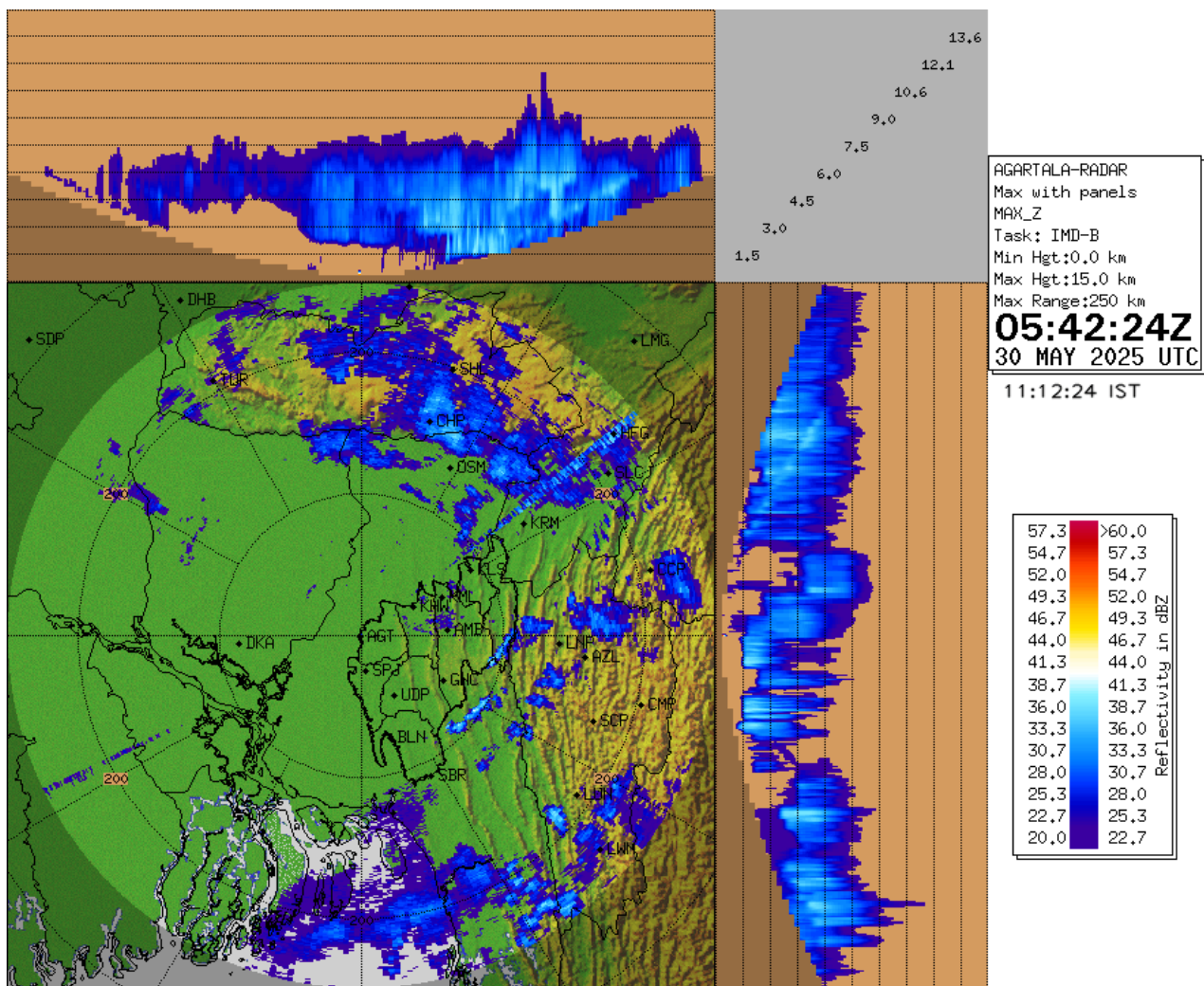
The Madden Julian Oscillation (MJO) is in phase 5 with amplitude close to 1 and would continue in same phase during next 2-3 days and with amplitude close to 1. The mid-level vertical wind shear is moderate (10-20 kt) over the system area & along the predicted path. Low level relative vorticity has decreased and is about $100 \times 10^{-6} \text{ s}^{-1}$ to the southeast of system centre. Low level convergence is around $50 \times 10^{-6} \text{ s}^{-1}$ to the northeast of system centre and upper level divergence is about $30 \times 10^{-6} \text{ s}^{-1}$ to the northeast of system centre. The total precipitable water imagery indicates warm moist air incursion over the entire region extending upto coastal areas of Gangetic West Bengal, Bangladesh and northeastern states. There would be orography enhancement of rainfall over the region due to southerly & southeasterly winds interaction with Garo Khasi Jaintia Hills & eastern Himalayas. Warm and moist air continues from northeast and eastcentral Bay of Bengal towards the system centre. It would continue so for next 24 hours.

**D.R.Pattanaik
Scientist, RSMC New Delhi**

Cloud distribution: (a) Isolated: <25%, Scattered:25-50%, Broken: 51-75%, Solid:>75%, Convection Intensity: (a) Weak: Cloud Top Temperature(CTT)>-25°C,(b)Moderate:CTT:-25°Cto-40°C,(c)Intense:CTT: -41°Cto -70°Cand(d)Very Intense::Less than -70°C
PROBABILITYOFCYCLOGENESIS(FORMATIONOFDEPRESSION):NIL:0%,LOW:1-33%,MODERATE:34-66%ANDHIGH:67-100%
ThisisaguidanceBulletinforWMO/ESCAPPanelMembercountries.VisitrespectiveNationalwebsitesforCountryspecificBulletins



Cloud distribution: (a) Isolated: <25%, Scattered:25-50%, Broken: 51-75%, Solid:>75%, Convection Intensity: (a) Weak: Cloud Top Temperature(CTT)>-25°C,(b)Moderate:CTT:-25°Cto-40°C,(c)Intense:CTT: -41°Cto -70°Cand(d)Very Intense::Less than -70°C
PROBABILITYOFCYCLOGENESIS(FORMATIONOFDEPRESSION):NIL:0%,LOW:1-33%,MODERATE:34-66%ANDHIGH:67-100%
ThisisaguidanceBulletinforWMO/ESCAPPanelMembercountries.VisitrespectiveNationalwebsitesforCountryspecificBulletins



Maximum Reflectivity (dBZ) Observation by Doppler Weather Radar (DWR) at Agartala



OBSERVED AND FORECAST TRACK OF DEPRESSION OVER BANGLADESH BASED ON 0300 UTC (0830 IST) OF 30th MAY, 2025



DATE/TIME IN UTC

IST=UTC + 0530

L: LOW PRESSURE AREA

WML: WELL MARKED LOW PRESSURE AREA

D: DEPRESSION (17-27 KT)

DD: DEEP DEPRESSION (28-33 KT)

CS: CYCLONIC STORM (34-47 KT)

SCS: SEVERE CYCLONIC STORM (48-63KT)

VSCS: VERY SEVERE CYCLONIC STORM (64-89 KT)

ESCS: EXTREMELY SEVERE CYCLONIC STORM (90-119 KT)

SuCS: SUPER CYCLONIC STORM (≥ 120 KT)

● LESS THAN 34 KT

○ 34-47 KT

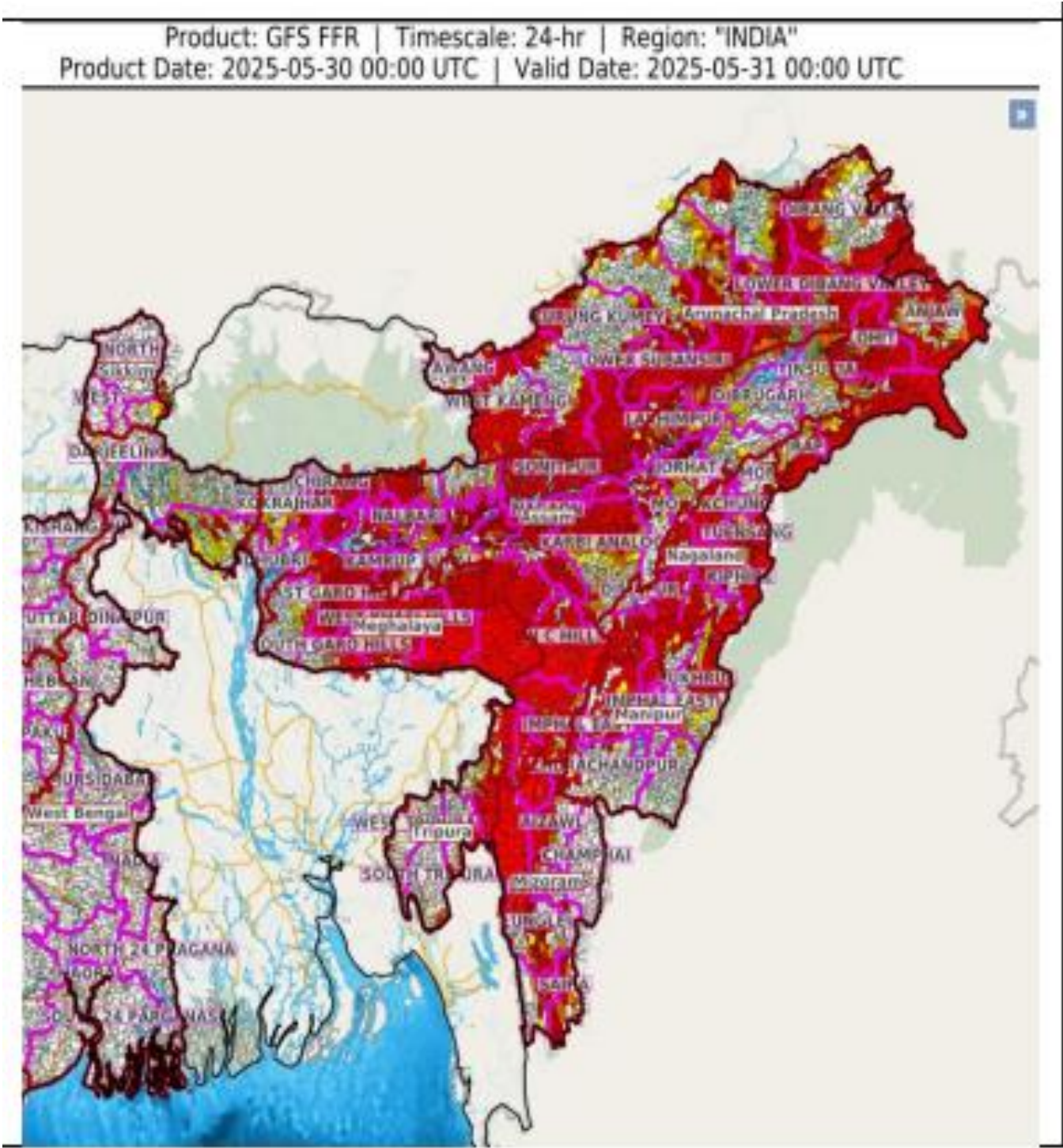
○ ≥ 48 KT

— OBSERVED TRACK

— FORECAST TRACK

▲ CONE OF UNCERTAINTY

24 hours Outlook for the Flash Flood Risk (FFR) till 0530 IST of 31-05-2025:



Flash Flood Threat	Flash Flood Risk
<div></div> High Threat (Take Action)	<div></div> High Risk (Take Action)
<div></div> Moderate threat (Be Prepared)	<div></div> Moderate Risk (Be Prepared)
<div></div> Low Threat (Be Updated)	<div></div> Low Risk (Be Updated)

Cloud distribution: (a) Isolated: <25%, Scattered:25-50%, Broken: 51-75%, Solid:>75%, Convection Intensity: (a) Weak: Cloud Top Temperature(CTT)>-25°C,(b)Moderate:CTT:-25°Cto-40°C,(c)Intense:CTT: -41°Cto -70°Cand(d)Very Intense::Less than -70°C
PROBABILITYOFCYCLOGENESIS(FORMATIONOFDEPRESSION):NIL:0%,LOW:1-33%,MODERATE:34-66%ANDHIGH:67-100%
ThisisaguidanceBulletinforWMO/ESCAPPanelMembercountries.VisitrespectiveNationalwebsitesforCountryspecificBulletins

Moderate to High flash flood risk likely over few watersheds & neighbourhoods of following Met Subdivisions during next 24 hours.

Arunachal Pradesh - Changlang, Dibang Valley, East Kameng, East Siang, Lohit, Lower Dibang Valley, Lower Subansiri, Papum-Pare, Tawang, Tirap, West Kameng, West Siang, Anjaw, Upper Siang and Kurung Kumey districts.

Assam & Meghalaya - Baksa, Barpeta, Bongaigaon, Cachar, Chirang, Darrang, Dhemaji, Dibrugarh, Goalpara, Golaghat, Hailakandi, Jorhat, Kamrup Metro, Kamrup Rural, Karbi Analog, Kokrajhar, Lakhimpur, Morigaon, N.C Hills, Nagaon, Nalbari, Sibsagar, Sonitpur, Tinsukia, Udalguri, Karimganj, East Garo Hills, East Jaintia Hills, East Khasi Hills, North Garo Hills, Ri Bhoi, South Garo Hills, South West Garo Hills, South West Khasi Hills, West Garo Hills, West Jaintia Hills, West Khasi Hills, Dhubri and Jaintia Hills districts.

Nagaland Mizoram Manipur Tripura (NMMT) - Bishnupur, Chandel, Churachandpur, Imphal East, Imphal West, Senapati, Tamenglong, Thoubal, Ukhrul, Aizawl, Kolasib, Lawngtlai, Lunglei, Mamit, Saiha, Serchhip, Dimapur, Kiphire, Kohima, Longleng, Mokokchung, Mon, Peren, Phek, Tuensang, Wokha, Zunheboto, Dhalai, Gomati, Khowai, North Tripura, Sipahijala, South Tripura and Unakoti districts. Sub-Himalayan West Bengal & Sikkim - East Sikkim, Darjeeling, Jalpaiguri and Kochbihar districts

Fishermen Warning Graphics

